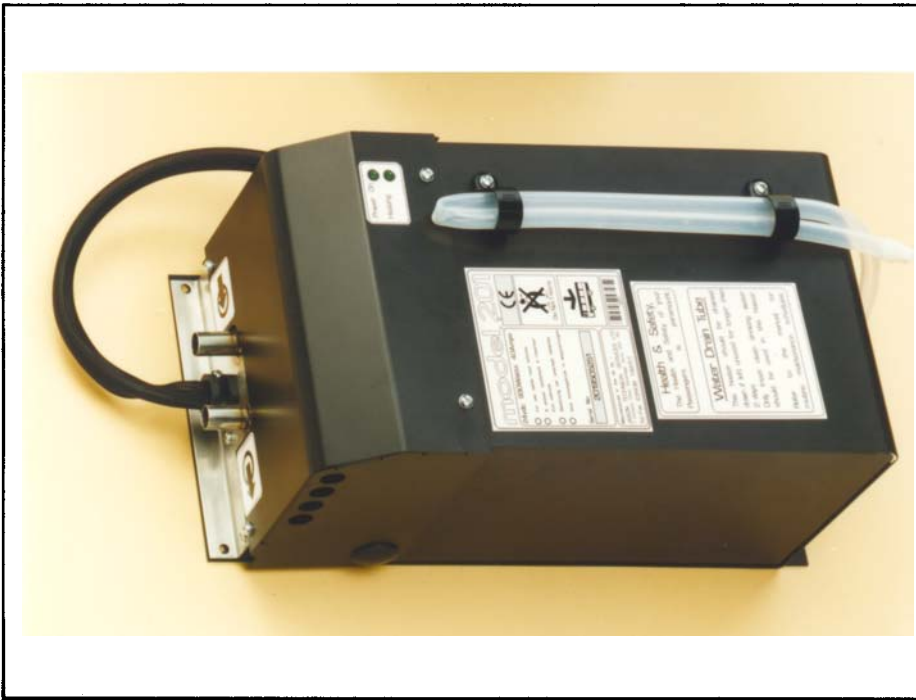


model 201

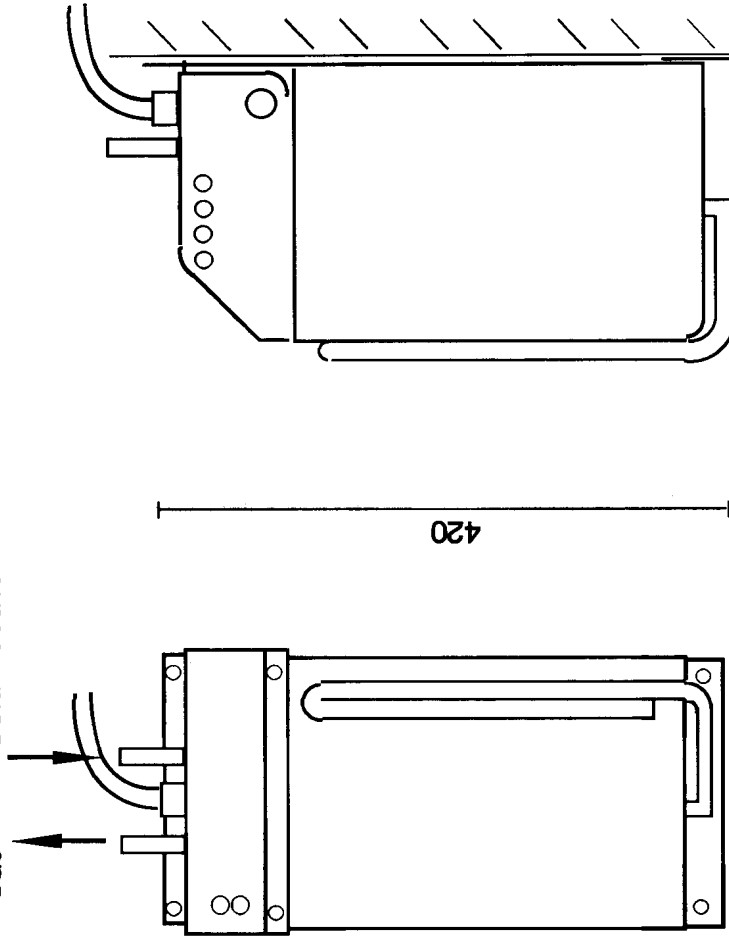
24vdc IN LINE WATER HEATER FOR VEHICLES



Supplied by

CE

Hot Water out Cold Water in



200

420

180

Features of the Heater

- Easy to install
- Very fast heat up time (15 mins 45amp unit)
- Temperature adjustable, can be used for hand washing or drinks.
- Boil dry protection
- Overheat protection
- In built heavy duty Bosch relay
- Water Drain facility
- Indicator lights to show power on & heating
- Alternator / ignition sensed (no flat batteries)
- High capacity 5 Litres stainless steel tank
- Easy plumbing connections, takes 15mm fittings
- Well insulated tank retains heat
- Available in several power options
- The unit should only be installed in Open Systems i.e. not pressurised
- Meets latest EU Directives and carries the CE mark
- Easy lift lid for maintenance and servicing
- Hygienic and safe to use
- Robust construction no plastic tanks to split
- Easy to transfer between vehicles

Version 1 Voltage 24vdc 40 amps 960 Watts Weight empty 9 Kg

Manufactured in the UK by Transvend Ltd 01438 743838 fax 01438 729713 www.transvend.co.uk